



Compact Hydraulic Actuator Series

INDUSTRY-LEADING PERFORMANCE. SIGNIFICANT SPACE SAVINGS.

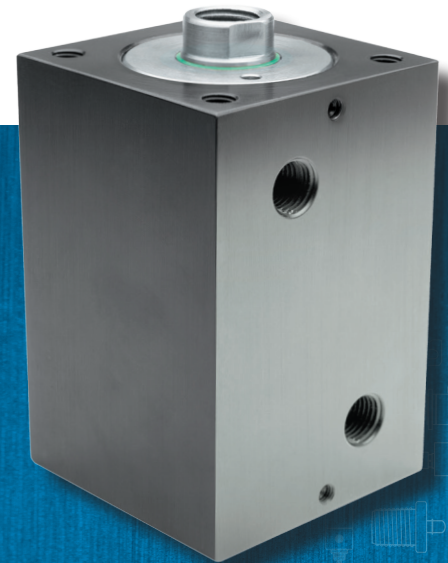
The Compact Hydraulic actuator series best compliments the existing NFPA hydraulic medium and high pressure series by offering significant space savings while providing the same heavy-duty pressure ratings.

The Compact Hydraulic series is designed to offer consistent performance and high forces in a small package; Compact Hydraulic actuators are metric in design (bore and rod sizes) and are offered in inch or metric mounting and porting. The Compact Hydraulic actuator series offers two options:

- Compact Medium Pressure Hydraulic Actuators (CMH) with aluminum construction up to 2030 PSI (140 Bar)
- Compact High Pressure Hydraulic Actuators (CHH) with steel construction at 3000 PSI (206 Bar).
- Both the CMH and CHH versions offer electroless nickel-plated cast iron bushing (end caps) and piston in conjunction with hard chrome plated piston rod material as standard for increased longevity.

FEATURES:

- **Piston rod is machined from a high yield, polished, and hard chrome-plated steel to reduce wear on the rod wiper and seal.**
- **Includes heavy lip polyurethane or nitrile seals, which are pressure-activated and wear-compensating for longevity**
- **Heavy dual lip urethane wiper seal removes contaminants on the retract stroke to ensure long life for all internal components**
- **CMH: Precision machined from high strength aluminum and black anodized for corrosion resistance, honed and work hardened I.D. finish (optional magnet).**
- **CHH: Precision machined from steel with a hot dipped black oxide coating for corrosion resistance, honed and work hardened I.D. with a micro finish for extended seal life.**



BENEFITS:

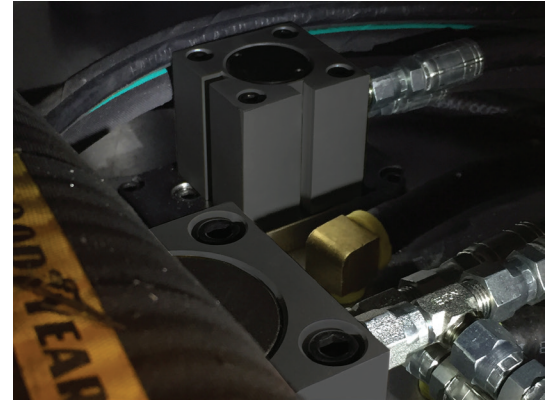
- + Unmatched service life
- + Robust design
- + Industry-leading delivery
- + Easily customized for today's automation equipment

ADVANTAGES

With Bimba's industry-leading support, you have access to online part configurations and an expansive 2D/3D CAD file library.

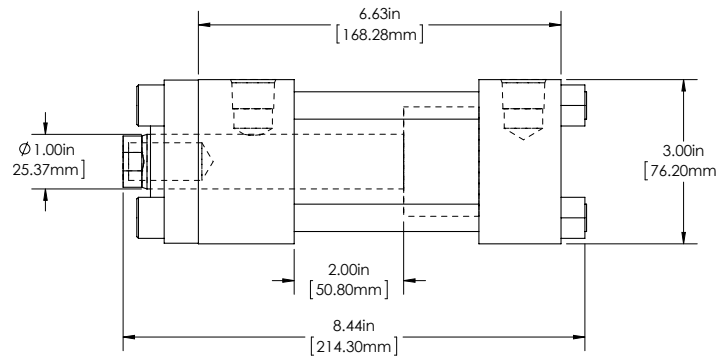
APPLICATION: PLASTIC INJECTION MOLD

When needing to mount a hydraulic actuator in a tight space, it usually means that the actuator will be difficult to service if needed. Using a high pressure actuator with extremely low maintenance requirements that is built for longevity is even more important. Using an electroless nickel-plated ductile iron rod bearing instead of a soft wear material, such as bronze, is just one key feature of the TRD Compact Hydraulic actuator series - built tough to last longer!

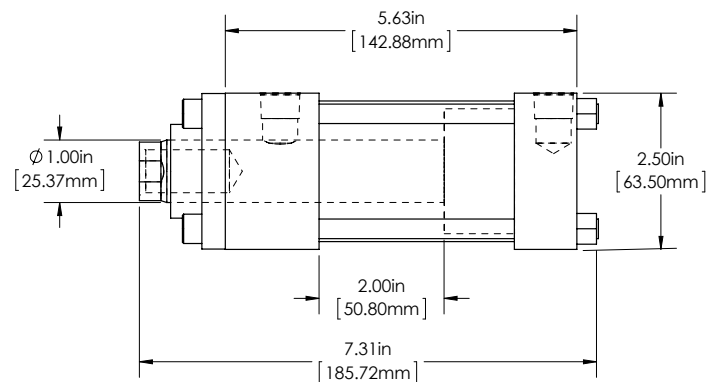


DIMENSION SPECIFICATIONS (SAME BORE AND STROKE):

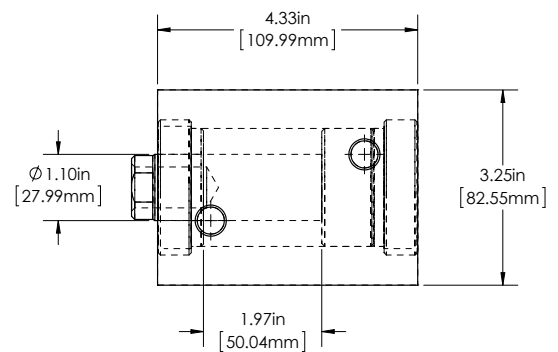
HIGH PRESSURE (HH) NFPA



MEDIUM PRESSURE (MH) NFPA



COMPACT HYDRAULIC (CMH & CHH)



We Make Things Move®



Bimba Manufacturing Company
University Park, IL 60484
Telephone: 708.534.8544
Fax: 708.235.2014
Email: cs@bimba.com
www.bimba.com



BIMBA IS AN ISO 9001 COMPANY.



WORLDWIDE DISTRIBUTION MEANS THERE IS A PROFESSIONAL STOCKING BIMBA DISTRIBUTOR NEARBY READY TO SERVICE YOUR NEEDS.